







ARCHITECTURAL METAL WALLS & CEILINGS

Pure + FreeForm is an architectural metal design studio specializing in bespoke finishes and cladding products for exterior and interior applications.

Our superior Lumiflon resin outperforms the competition, allowing each finish to maintain its gloss and color, and our panels can be fabricated on-site or in the fabricator's shop.

We work closely with each project's design team to produce site-specific finishes and systems for various metal cladding applications.

Our vision is to contribute, as a manufacturer, in creating destinations recognized globally for their inspiring, contextual, and purposeful designs.



DESIGN POTENTIAL

With no upcharge for customization, Pure + FreeForm offers each project the opportunity to create a unique, site-specific finish that enhances the design of the space or building.

Whether selecting one of our in-house finishes, redesigning it, matching a finish, or designing a custom finish, we work closely with designers through our simple proof process.

The selected finish can then be transformed into an endless selection of panel types, from exterior walls, soffits, or louvers, to interior ceilings, millwork, and signage.



WE ARE
OPEN





PRODUCT FACTS

Pure + FreeForm uses the highest grade alloys and time-tested industry leading resins.

We have the ability to print up to 100,000 square feet daily using an off-set gravure process that offers a resilient finish with robust performance and life-cycle cost benefits.

The aluminum substrates we use are available in varying thicknesses (0.6mm-3mm), a maximum sheet size of 48" x 177" and are 100% recyclable.

Our single-skin, noncombustible finishes resist UV degradation, corrosion, and chemical exposure.

All of our finishes hold a 20-year warranty on fade, chalk, gloss and color with little to no maintenance required.



SUSTAINABILITY

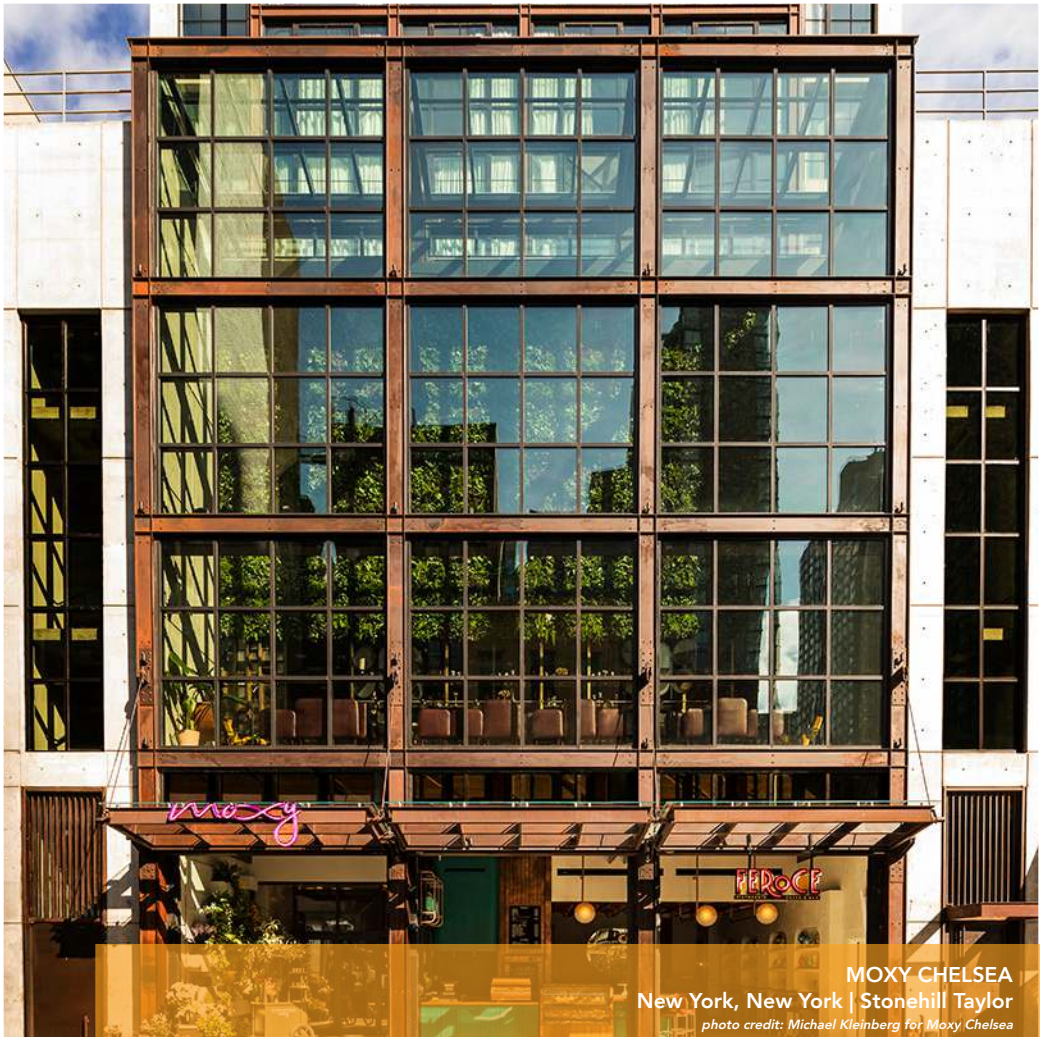
Pure + FreeForm's commitment to sustainability is fundamental for our product line, and our manufacturing process.

Our core product line is aluminum — one of the earth's most plentiful recyclables.

We use a minimum of 20% post-consumer recycled aluminum in our metal wall and ceiling panels, and according to the Aluminum Association, nearly 75 percent of all aluminum ever produced is still in use today.

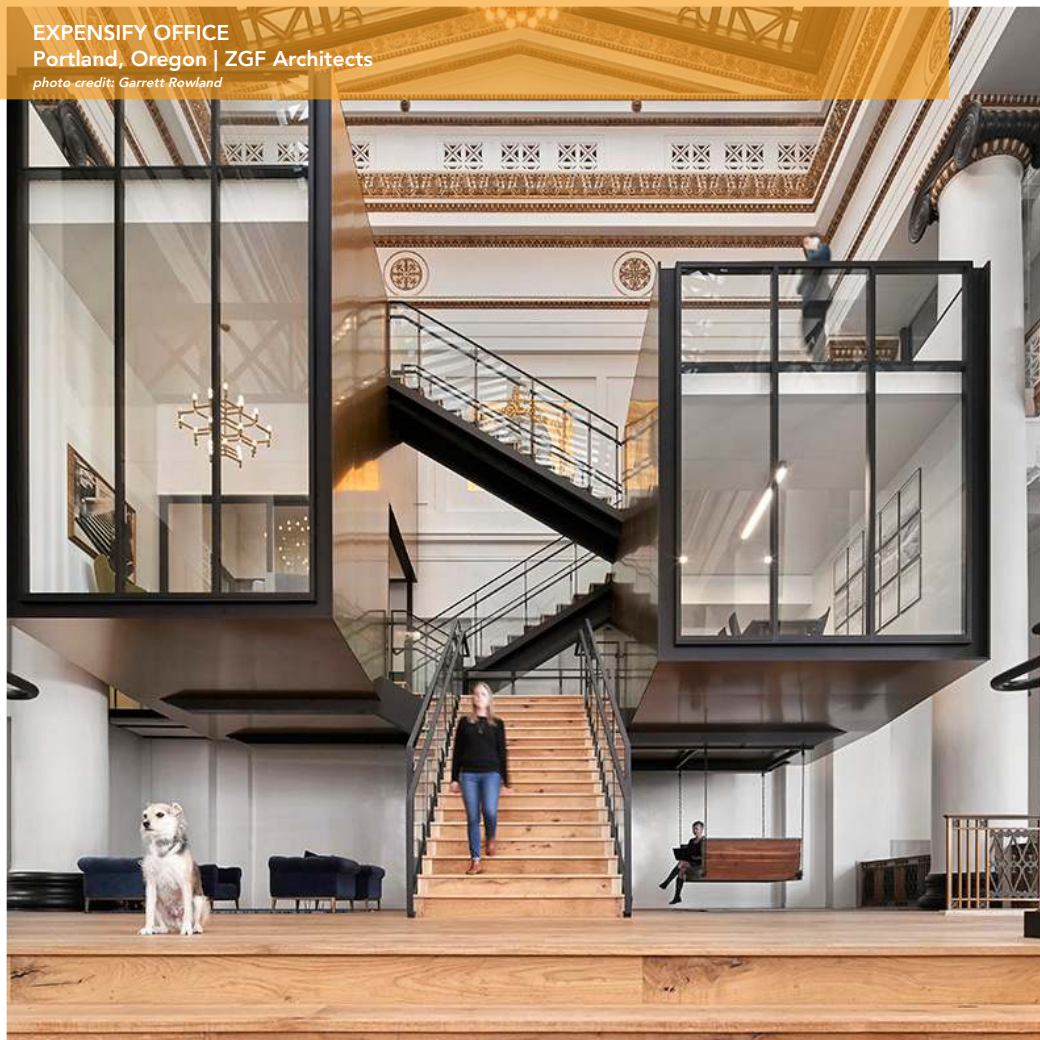
Durable and low maintenance requirements.

Our painting process gives superior quality that goes beyond aesthetics; offering resilience, robust performance and life-cycle cost benefits.



MOXY CHELSEA
New York, New York | Stonehill Taylor
photo credit: Michael Kleinberg for Moxy Chelsea

EXPENSIFY OFFICE
Portland, Oregon | ZGF Architects
photo credit: Garrett Rowland





canopy

canopy
PORTLAND HOTEL, RESTAURANT
455

CANOPY BY HILTON
Portland, Oregon | ZGF Architects
photo credit: Josh Partee

CULTURAL VILLAGE AT PORTLAND JAPANESE GARDEN
Portland, Oregon | Kengo Kuma & Associates
photo credit: Jeremy Bittermann





SMITHSONIAN NATIONAL MUSEUM OF AFRICAN AMERICAN HISTORY AND CULTURE
Washington, D.C. | Freelon Adjaye Bond & SmithGroup

photo credit: Brad Feinknopf / OTTO

CONFIDENTIAL CONSULTING CLIENT - CUSTOM MILLWORK

New York, New York | Gensler

photo credit: Devon Banks





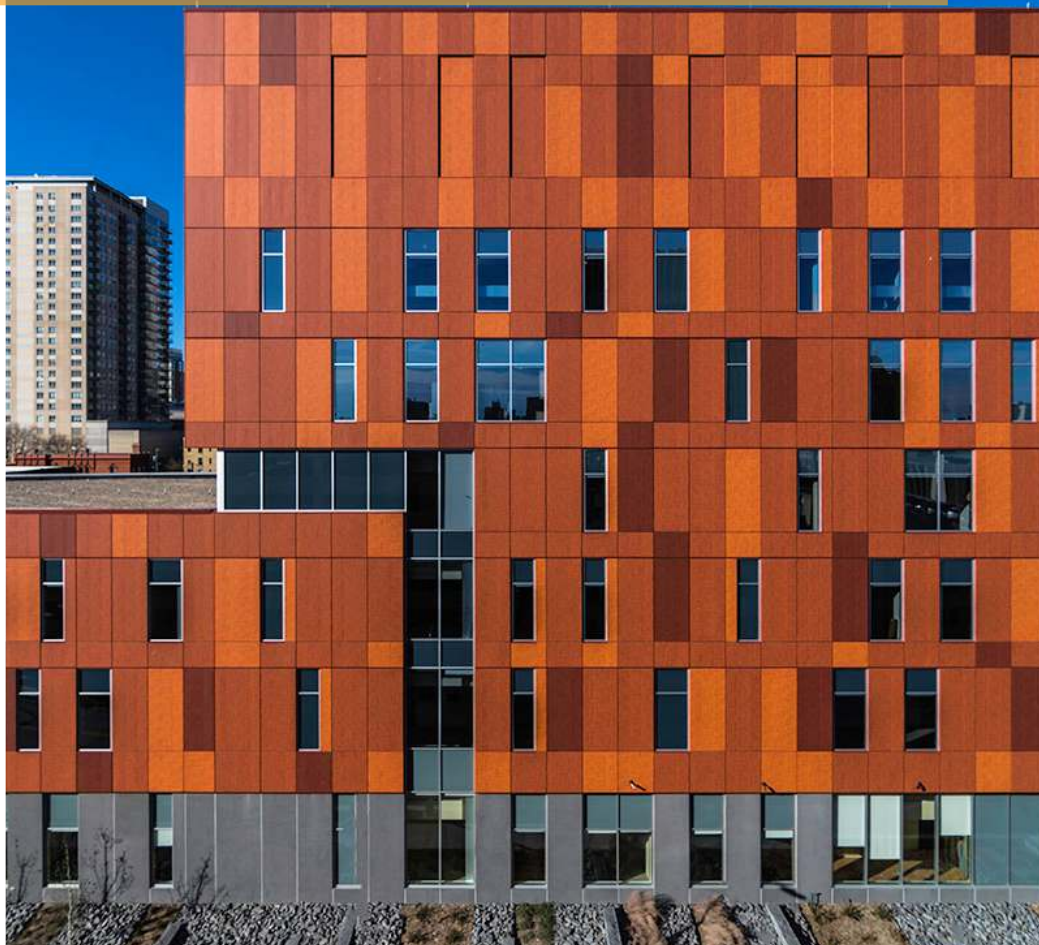
SQUARESPACE HEADQUARTERS

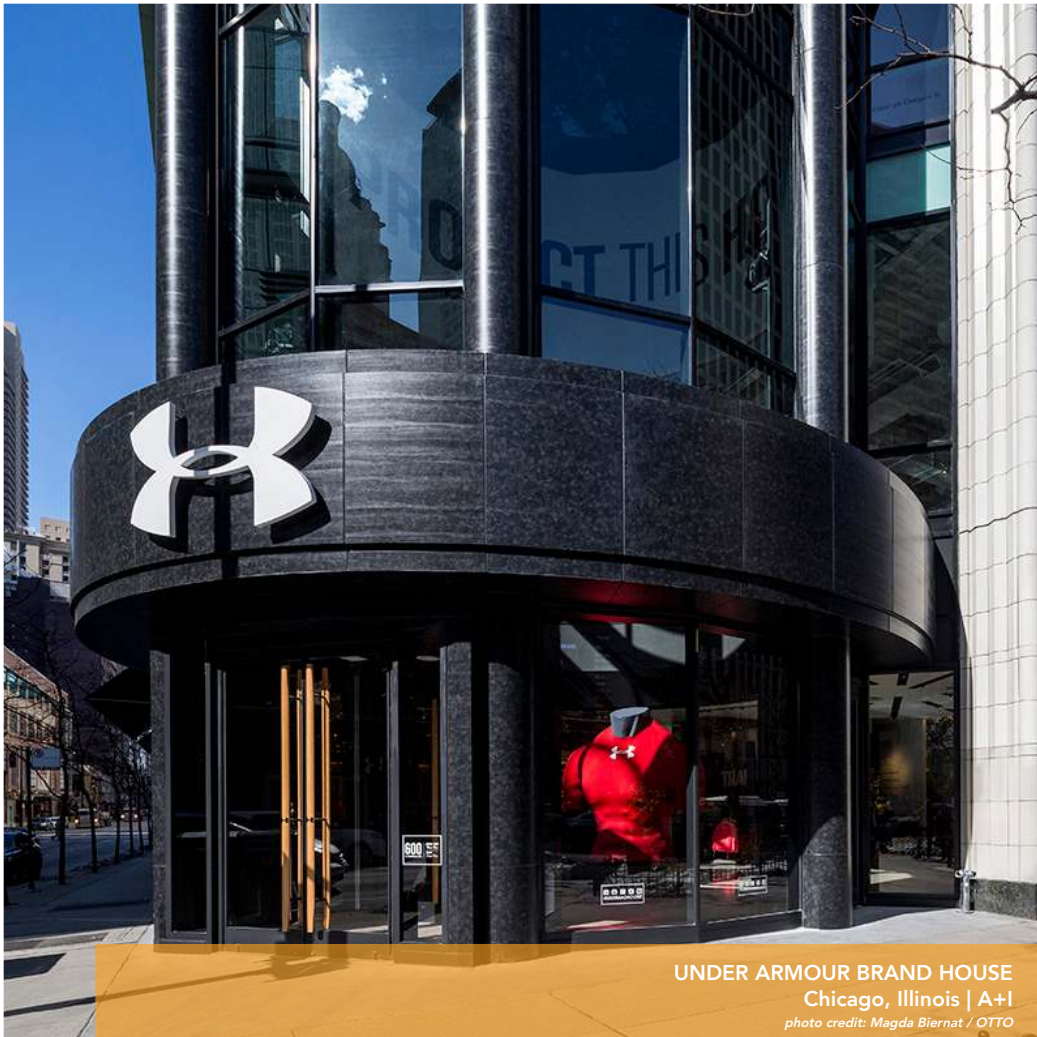
New York, New York | A+I

photo credit: Magda Biernat / OTTO

HENNEPIN COUNTY MEDICAL CENTER
Minneapolis, Minnesota | BWBR

photo credit: Joe Brennan





UNDER ARMOUR BRAND HOUSE

Chicago, Illinois | A+I

photo credit: Magda Biernat / OTTO

PITKIN COUNTY LIBRARY
Aspen, Colorado | Hopkins Architecture
photo credit: Joe Brennan





K.O. ABERDEEN PUBLIC LIBRARY
Aberdeen, South Dakota | CO-OP Architecture
photo credit: Spensor Sommers / CO-OP Architecture

ADIDAS STADIUM STORE FLAGSHIP

New York, New York | Gensler

photo credit: Joe Brennan





NBA FLAGSHIP
New York, New York | Gensler
photo credit: Joe Brennan

WALL PANEL SYSTEMS

Material Type: Aluminum

Thickness: 0.6mm to 3mm

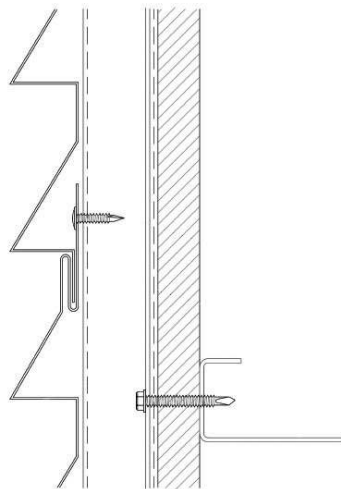
Profiles: Standard, Custom, Break Formed or Roll Formed

Fastening Type: Concealed or Exposed

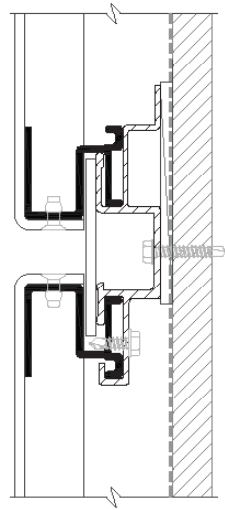
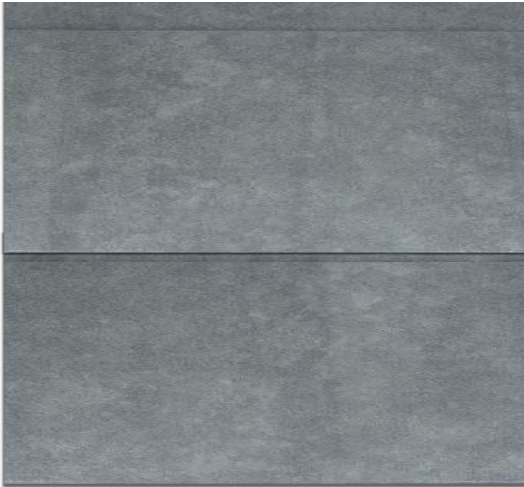
Max Dimensions: 48" x 177"

CUSTOM CORRUGATED PANEL SYSTEM

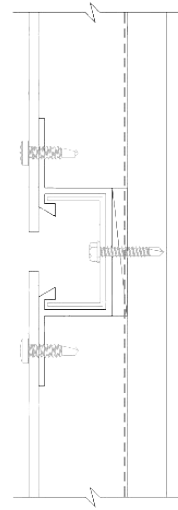
(SHARK FIN PANEL)



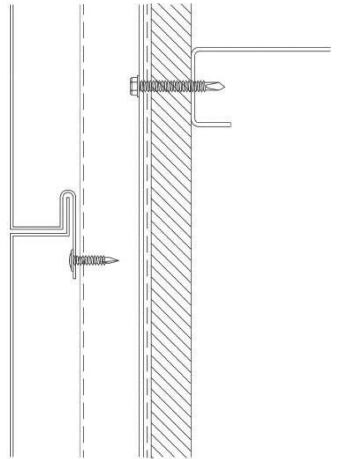
DRY JOINT PLATE PANEL SYSTEM



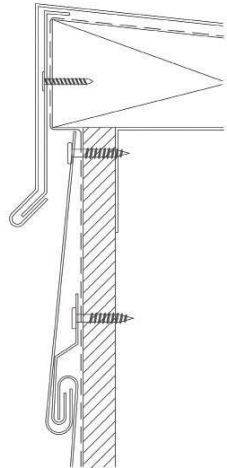
FACE FASTENED PANEL SYSTEM



FLUSH/REVEAL PANEL SYSTEM



FLAT LOCK PANEL SYSTEM



CEILING PANEL SYSTEMS

Material Type: Aluminum or Steel

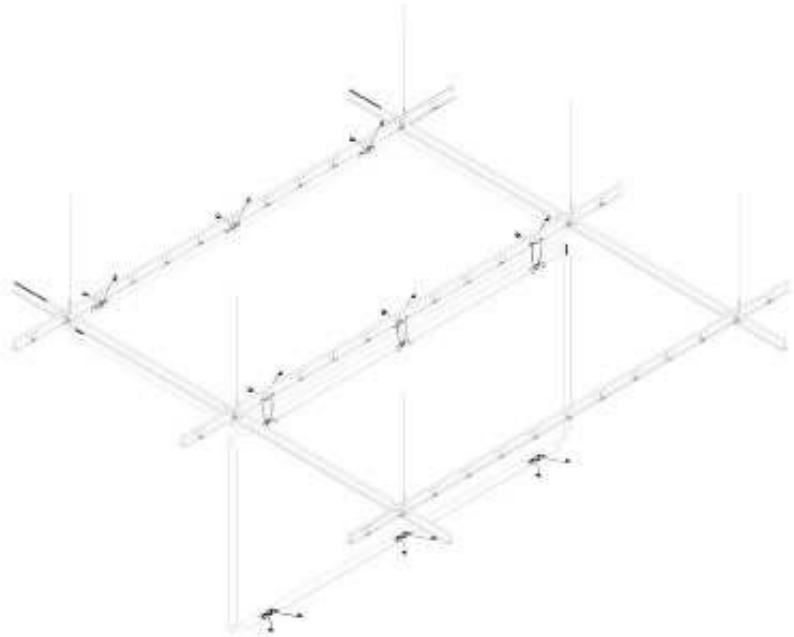
Thickness: 0.6mm to 3mm

Profiles: Standard or Custom

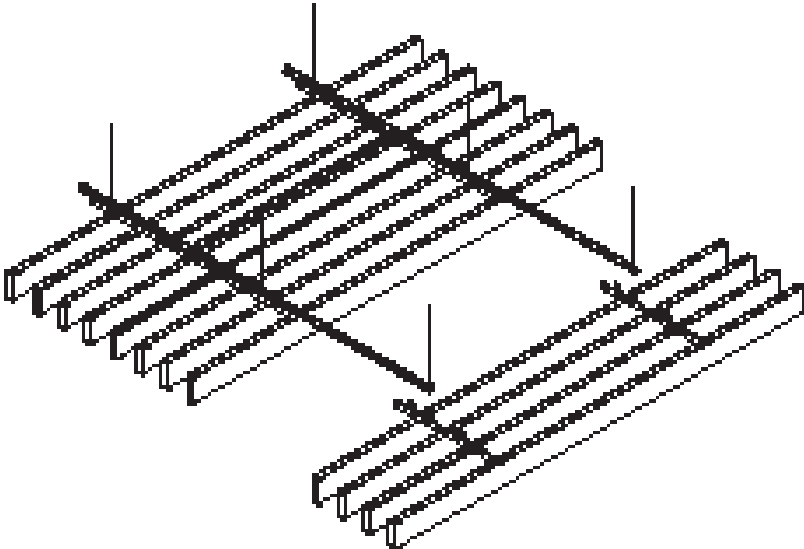
Fastening Type: Concealed or Exposed

Max Dimensions: 48" x 177"

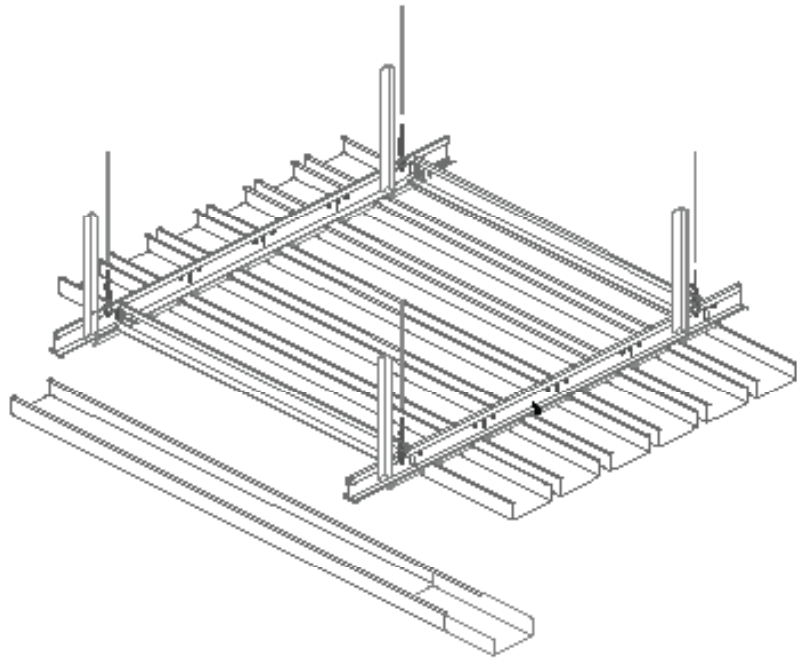
INTERIOR TORSION SPRING SYSTEM



BAFFLE CEILING SYSTEM



| LINEAD CEILING SYSTEM





FINISHES

Pure + FreeForm offers different levels of design and customization for finishes.

Option 1: Select a Finish

Select one of our in-house curated finishes featured on our website and specify it as-is, ready to use.

Option 2: Re-Design a Finish

Start with one of our in-house curated finishes as a base, then change the design, pattern, color, gloss, texture, or scale to achieve your design intent. We create a proof for your review and approval.

Option 3: Match a Finish

Send us a physical sample to match for design, pattern, color, gloss, texture, and scale. We create a proof for your review and approval.

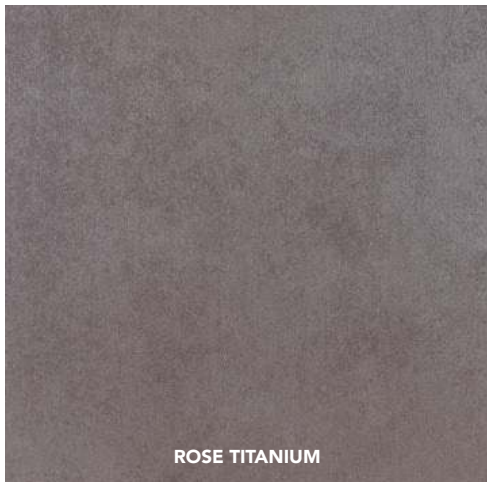
Option 4: Design a Finish

Work with us to create a new finish with limitless possibilities by diamond-engraving a proof design plate to match the exact specifications for your project. We create a proof for your review and approval. If it's not perfect, we continue to adjust the design per your feedback, until it is.

All of our finishes hold a 20-year warranty on fade, chalk, gloss and color with little to no maintenance.



SUPER METAL FUTURE COLLECTION





COSMOS



CASTANYE BLU



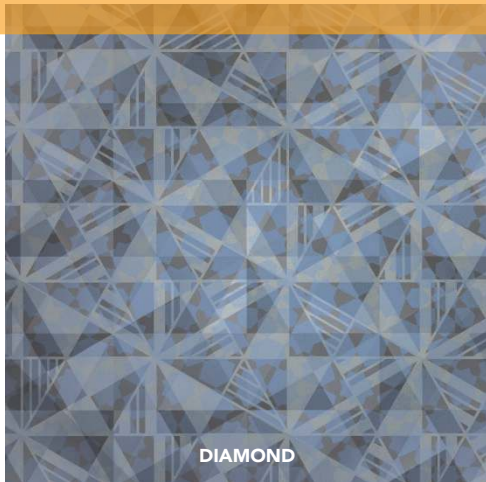
GRUNGE GOLD



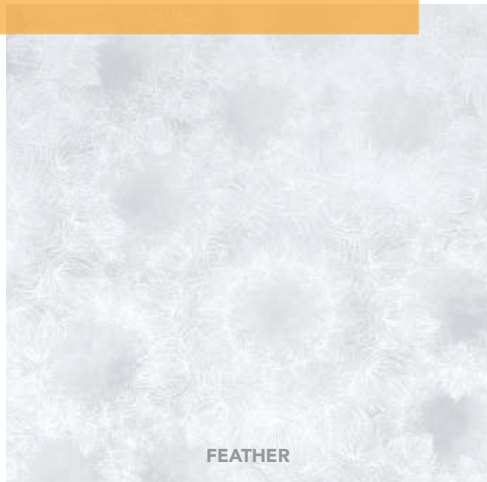
TERRA DI SIENNA

THE CHAMELEON COLLECTION

Designed by Marcel Wanders for Pure + FreeForm



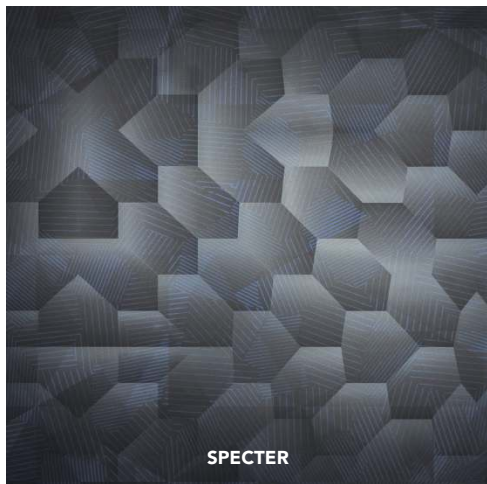
DIAMOND



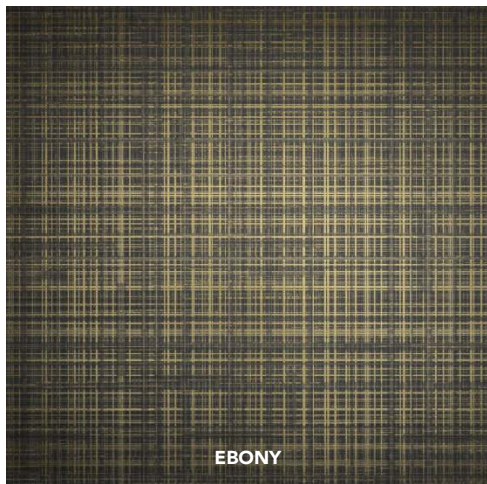
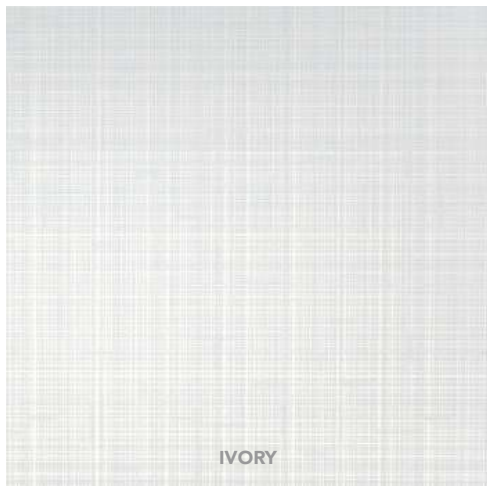
FEATHER



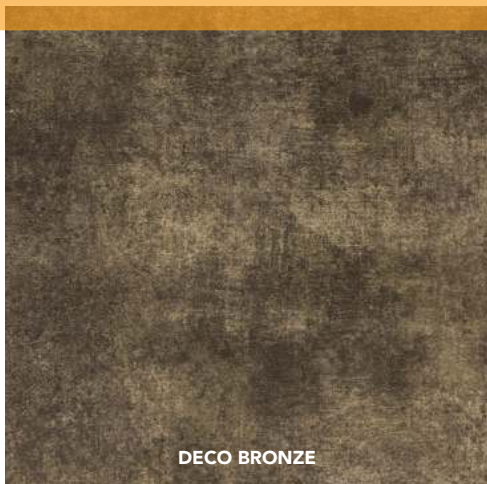
MIRAGE



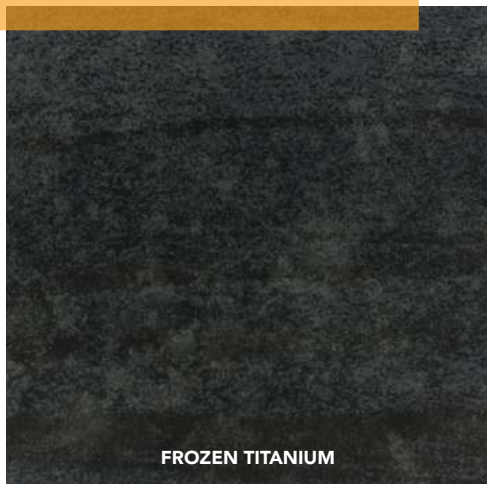
SPECTER



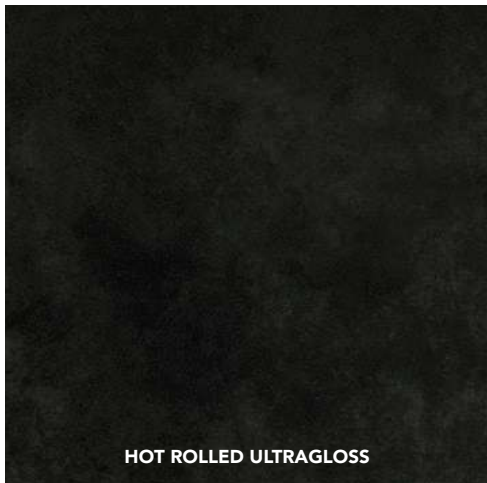
SIGNATURE SERIES & LUXURY VINTAGE COLLECTION



DECO BRONZE



FROZEN TITANIUM



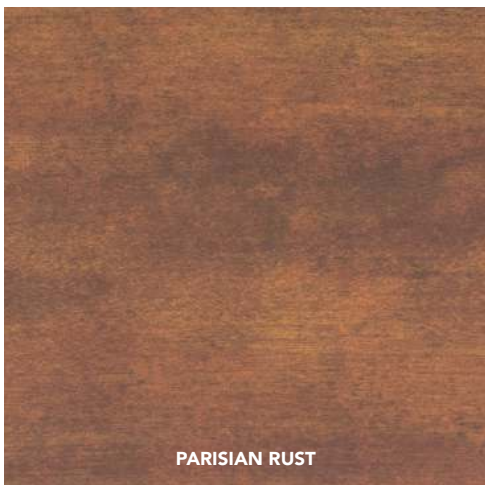
HOT ROLLED ULTRAGLOSS



PACIFIC BRONZE



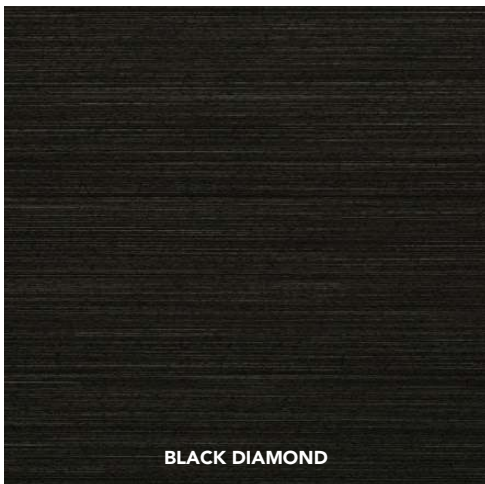
GUN METAL



PARISIAN RUST

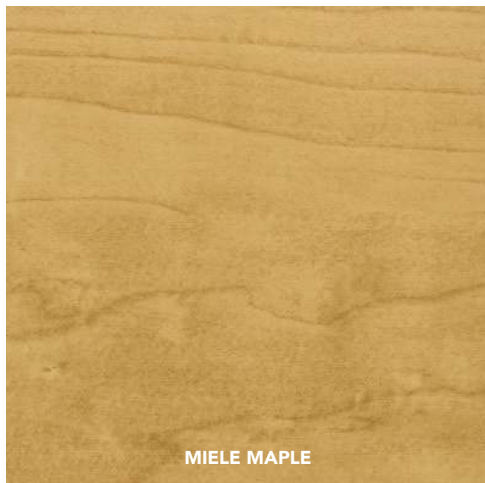
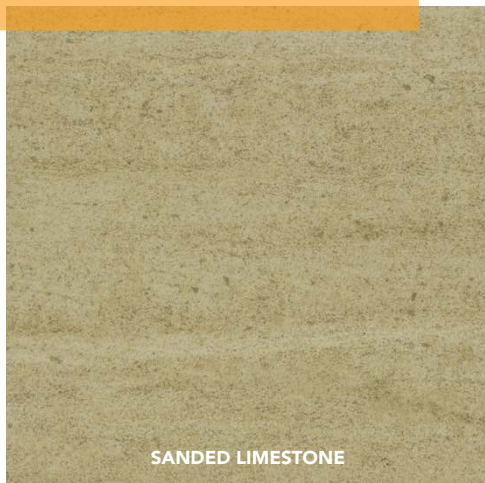
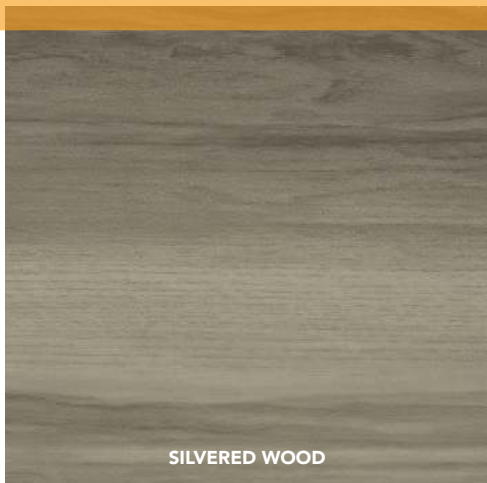


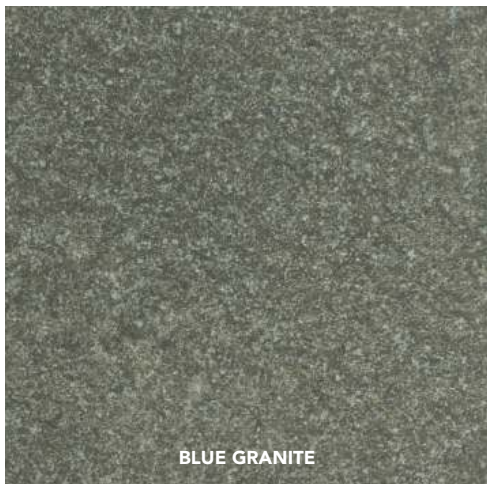
VINTAGE NICKEL



BLACK DIAMOND

WOOD & STONE SOLUTIONS





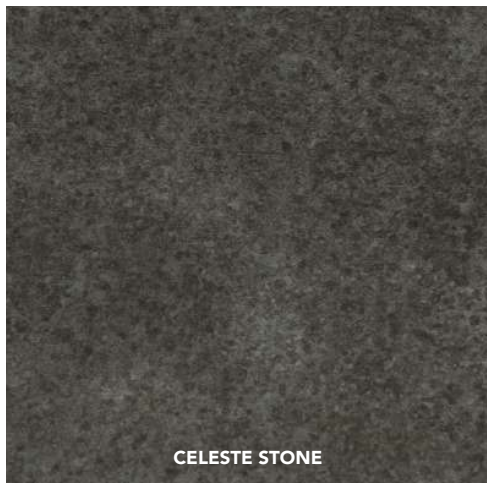
BLUE GRANITE



HERMOSA WOOD



ROMA NOCE



CELESTE STONE



www.purefreeform.com | info@purefreeform.com | [instagram.com/purefreeform](https://www.instagram.com/purefreeform)